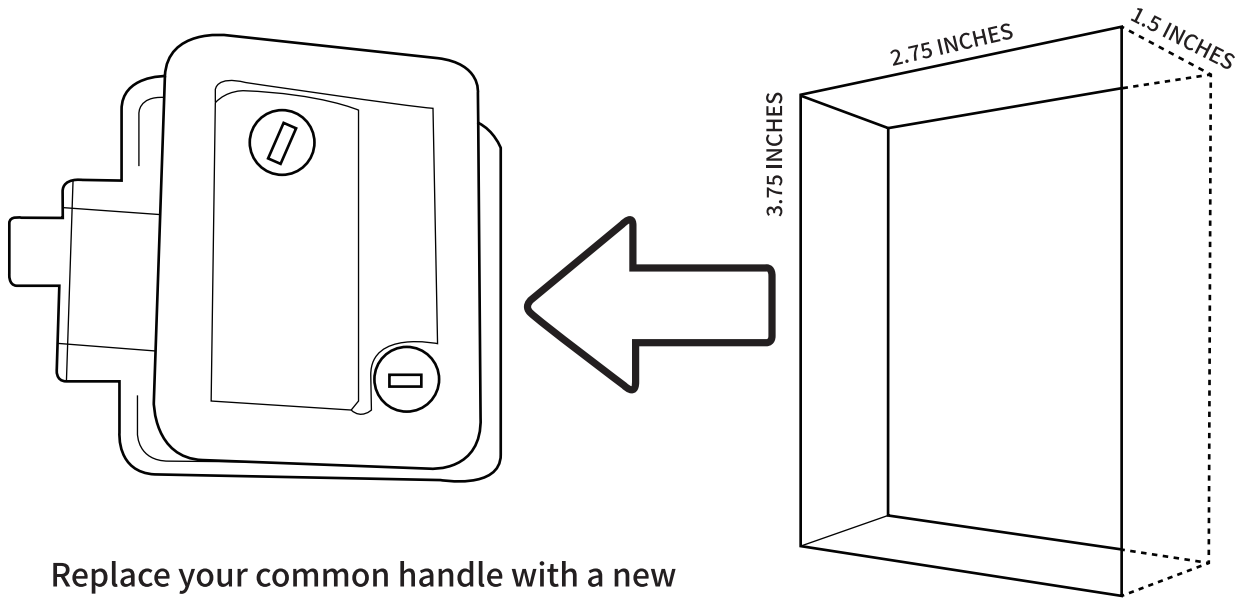




# RV DOOR FINGERPRINT KEYLESS HANDLE LOCK

*User Manual*

# RV Door Lock Operation Instructions



Replace your common handle with a new  
RV Door Keyless Handle Lock

---

The opening for your common handle will  
measure approximately 3.75 inches tall x  
2.75 inches wide x 1.5 inches deep

# RV Door Lock Installation Instructions

## Remove the Existing Handle

1. Securely latch your RV door in the open position.
2. Remove the 4 screws from the back of the existing handle(see Fig.1).
3. Remove the 2 screws and the strike plate from the side of the door (Fig.2)-you will now be able to remove the front portion of the handle (Fig.3).

*- At this point you are ready to install and program your new RV Door keyless Handle Lock.*



Fig.1

Fig.2



Fig.3

## Installing the new Keyless Handle

1. Carefully remove your new RV Lock from its packaging and place all the parts on a flat,non-abrasive surface.
2. Remove the 2 screws holding the battery cover and install the 4 AA alkaline batteries . *(please consult the instructions section for installing the batteries on Pag 5).*
3. Slide the Front Handle of your new RV Door Lock into the opening on the front of the door (Fig.4),while carefully pulling the wires ahead of the lock and through the opening(Fig.5).



Fig.4

# RV Door Lock Installation Instructions

Then, hold the front handle in place so that it does not fall and attach the new strike plate with the 2 shorter screws on the door jamb side (Fig.6).

4. While holding the RV Door Lock's Back Handle, connect the battery wires to the Front Handle that is already in the door (Fig.7). A confirmation beep signifies that the connection is made.

**NOTE:** "ON/OFF" switch does NOT have to be in the ON position (This switch only turns on the ability to use the FOB/remote).

5. Carefully align and attach the back handle while gently tucking excess wires into the void area. Hold the paddle of the Back Handle closed while inserting the paddle tooth into the Front Handle housing.

**NOTE:** Make sure not to pinch or cut wires during installation.

6. Use a #2 Phillips screwdriver to install the 4 longer screws. For the moment, only tighten the screws tight enough to keep the lock securely against the door (Fig.8).

7. Adjust and straighten the Front Handle in the opening. Once straight, hold it in place while fully tighten the 4 longer screws of the Back Handle (be careful not to overtighten).

8. Type in the numeric code (default code is: "1234") and press the "LOCK" button. Your Handle should now be functioning correctly.

*-If the keypad does not function correctly, press the "code reset" button (Fig9) on the Back Handle until you hear a long beep (approx. 5seconds). This will reset your keypad code to "1234".*

## NOTE

- If the door is hard to shut or will not close tight, simply adjust the strike plate on the jamb side of the door.
- **DO NOT** place your mechanical keys inside your trailer. Keep them somewhere outside of the trailer, (like in a glove box) so they are available if you need them.

Fig.5



Fig.6



Fig.7



Fig.8



Fig.9



# RV Door Lock Operation Instructions

## Program Your Fob/Remote

1. Turn the switch to “ON” at the back of your handle (Fig 10). Then press the “FOB Learn” button located just above the ON/OFF switch on the back of the handle (Fig 11). A short , quick beep will confirm that you entered the programming mode.
2. Now press the LOCK button on your REMOTE (Fig 12) until the handle confirms a sync with a long beep (may take 2 to 3 clicks).
3. Finally,press the LOCK/UNLOCK remote button to confirm the actuation of the deadbolt on your RV Door Handle Lock.

### NOTE:

- *If remote programming did not work or if you have additional remotes to program,simply repeat steps #1,#2 and #3.*
- *You must hold the remote buttons down for a couple of seconds to actuate the handle ,this is a safety feature against accidental pushes.*



# RV Door Lock Operation Instructions

## Program Your Keypad

1. Write down your desired “new” code below.

— — — — —  
(we recommend 4 to 8 digits)

2. While holding down the “8” button, simultaneously press the “LOCK” button, then release both. A long confirmation beep signifies that you have entered the programming mode .

3. Type in the existing code (default code is: “1234”) and then press the “LOCK” button.

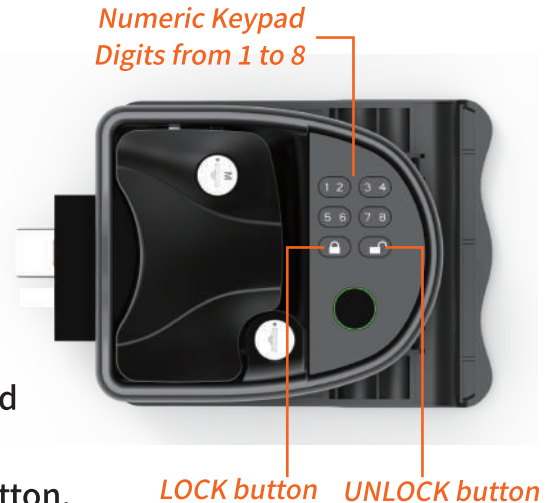
4. New type in the new code , then press the “LOCK” button.

5. Type in the same new code and again press “LOCK” . A long confirmation beep confirms your new programming.

6. To ensure your new code is working type in the new code and press the lock or unlock button. The Keypad should confirm the accepted code by actuating the deadbolt.

- If the programming is unsuccessful, simply press and hold “code reset” button for 5 seconds on the back handle and

- The keypad will time-out after 10 seconds of being idle. If you make a mistake simply start over at step #1.



# RV Door Lock Operation Instructions

## Program Your Fingerprint Recognition

1. Press the “FOB Learn” button located just above the ON/OFF switch on the back of the handle (Fig 10).
2. While pressing the "FOB learn" button, place your finger on the fingerprint sensor (Fig 11). When the fingerprint sensor starts flashing blue light, release the FOB learn button.
3. When the finger is attached to the fingerprint sensor (see Figure 12), and a beep is heard, lift the finger. This step needs to be repeated three times until a long drop is heard, which means that the finger has been matched successfully.
4. When a fingerprint is successfully matched, the fingerprint sensor area is flashing blue light. At this time, it can match other fingerprints. If it is not necessary to match other fingerprints, it needs to wait until the flashing blue light is off before it can be used normally.
5. In the process of fingerprint matching, if you hear a long beep, it means that the fingerprint has been matched and does not need to be rematched.

### **NOTE:**

- If fingerprint recognition programming did not work or if you have additional remotes to program, simply repeat steps #1,#2,#3,#4,#5

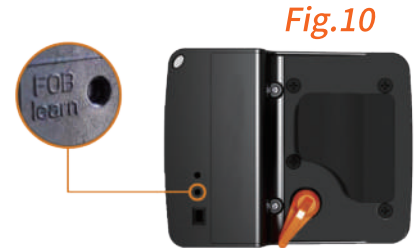


Fig.10



Fig.11



Fig.12

# RV Door Lock - Battery Use and Replacement

## Program Your Fob/Remote

Remove the 2 screws holding the battery cover on the back of the Handle (Fig 13) and install 4 AA alkaline batteries (Fig 14). A beep will confirm that the handle has power.

### NOTE:

- *When replacing the batteries, install hi-quality and fully charged alkaline batteries.*
- *When you swipe your IC Card or use the remote control, there will be three long beeps means the batteries are low.*
- *Changing the batteries on your Handle will not change the current IC Card or remote FOB programming.*
- *To save battery life and avoid handle damage, remove the batteries in the handle when you are not in travel season.*

Fig.13



Fig.14

